

PAPUA NEW GUINEA REDD INITIATIVE

**Mr. Goodwill Amos
PNG Forest Authority**

PRESENTATION OVERVIEW

- Background Brief on PNG
- Re-Organisation of Papua New Guinea Forest Authority (PNGFA)
- Office of climate change & development
- **Rates and Causes of Deforestation and Forest Degradation in PNG**
- **Selection Criteria for REDD+ Pilots**
- **Five Selected Provinces for piloting REDD pilots**
- **PROVINCES FOR THE Proposed REDD**
- **COLLABORATION FOR PROGRESSING REDD PILOTS**

- **REDD+ Pilot Sites and Initiatives**
- **REDD+ Pilot Site**
 - ❖ **What has been done for April Salumei**
 - ❖ **What has been done for Central Suau**
- **Climate Change Initiatives and Activities**
- **Constraints and Challenges**
- **Next Steps**

BACKGROUND

- ✘ PNG Occupies the eastern half of the *Island of New Guinea, just north of Australia between 3.5 deg. and 12 deg. S*
- ✘ *It has a rugged topography with the highest peak reaching over 4,000m*
- ✘ *Dissected by numerous rivers with the Sepik and Fly Rivers being the largest and longest.*
- ✘ *Climate is tropical humid with temperatures ranging from 20 – 32°C and rainfall ranging from just below 1000mm to over 8000mm pa.*
- ✘ *Total Land Area: 46.17 million ha, 12.1% comprises the large and smaller islands (600)*
- ✘ *Total Forest Area: 28.6 million ha or 62%*
- ✘ *Total Population: 7.1 million; Growth Rate: 2.7% pa*
- ✘ *Main Exports: Gold, Copper, Oil Gas, Timber, Agriculture Crops (Oil Palm, Cocoa, Coffee, Tea, Copra, Vanilla) and Fisheries (Tuna)*

Papua New Guinea

Legend

- National capital
- Provincial capital
- Non-forest vegetation
- Forest
- Rivers and lakes



Re-Organisation of Papua New Guinea Forest Authority (PNGFA)

After COP 13 in Bali, Indonesia in 2007, the PNGFA began reviewing all the 19 Provincial Forest Plans to include Climate Change, REDD+ and AR/CDM initiatives into the Plans

During 2008 and 2009, a major restructure was conducted within PNGFA which saw the creation of a new Branches and Program Unit to address climate change issues. These include:

- **Forest Policy and Planning Directorate**
 - REDD and Climate Change Branch
- **Forest Research Institute (FRI) - Lae**
 - Natural Forest Management Program Technical Unit to be responsible for:
 - conducting research into forest Biomass Surveys and assess the five (5) carbon pools; and
 - Forest species vulnerability and Adaptation

-
- Furthermore, PNGFA has since 2009-:
 - Revised the National Forest Development Guidelines and
 - Formulated the Forestry and Climate Change Framework For Action 2009 – 2015

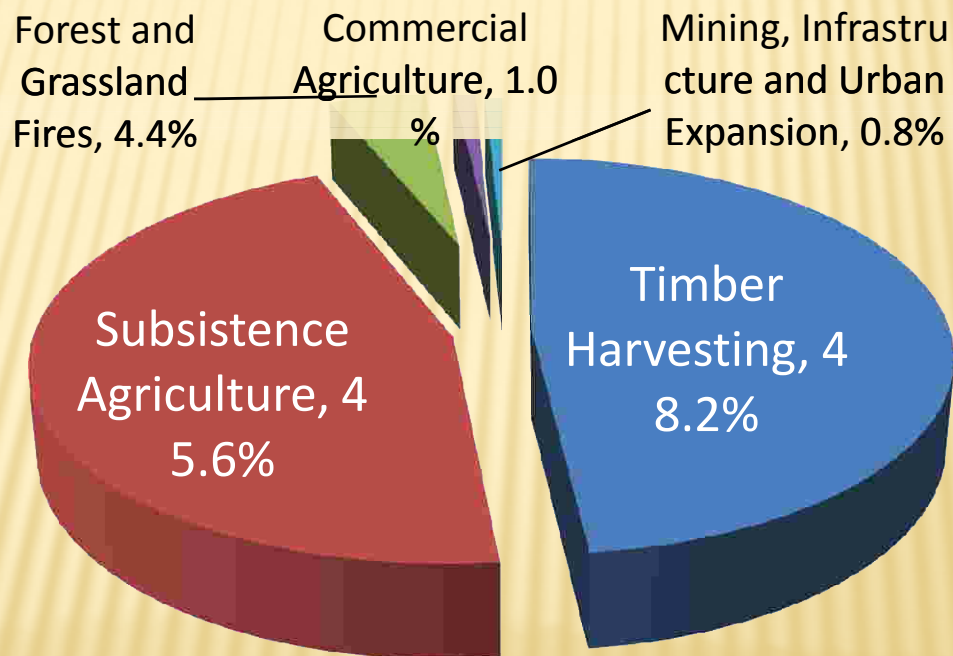
OFFICE OF CLIMATE CHANGE & DEVELOPMENT

An Office of Climate Change & Development (OCCD) was established in 2010 to co-ordinate and focus its efforts on drawing up the country's Climate Compatible Development Strategy that:

- ❖ Promote economic development through low-carbon growth.
- ❖ Mitigate carbon emissions through participation in a global REDD+ scheme.
- ❖ Draft a National Climate Change Policy for NEC's approval
- ❖ Adaptation to climate-related hazards.
- ❖ Assist in aligning all sector policies and actions with the National Development Strategies and in particular Pillar five of the PNG Vision 2050, concerning Climate Change and Environment Sustainability.

RATES AND CAUSES OF DEFORESTATION AND FOREST DEGRADATION IN PNG

- 1.41% of PNG's forest were being deforested or degraded per year.
- The major causes of deforestation and forest degradation in PNG have been logging and subsistence agriculture.



Shearman et al, 2008

SELECTION CRITERIA FOR REDD+ PILOTS

PNGFA in 2008 initiated a small working group comprising academic staff from universities as well as PNGFA and PNGFRI to establish some criteria for selection four provinces, representing the four regions in the country to pilot REDD initiatives. The group came up with the following criteria:

- + Province must have its Provincial Forest Plans approved by respective Provincial Executive Council (PEC's).**
- + Located at different altitudinal zones i.e. 0 – 4,000 m.a.s.l. with different forest or vegetation types**
- + Site selected must have a high potential risk of threats from both natural and human causes (e.g., cyclones, fires, population increase, mining, logging and agriculture expansions).**
- + Easily accessible by the general public.**
- + Owned by traditional customary owners, state or private individual(s).**

FIVE SELECTED PROVINCES FOR THE PILOTING REDD

- **Eastern Highlands Province**
 - **Afforestation of grassland areas – 10,000 – 20,000 ha**
 - **Forest conservation – 5,000 – 10,000 ha**

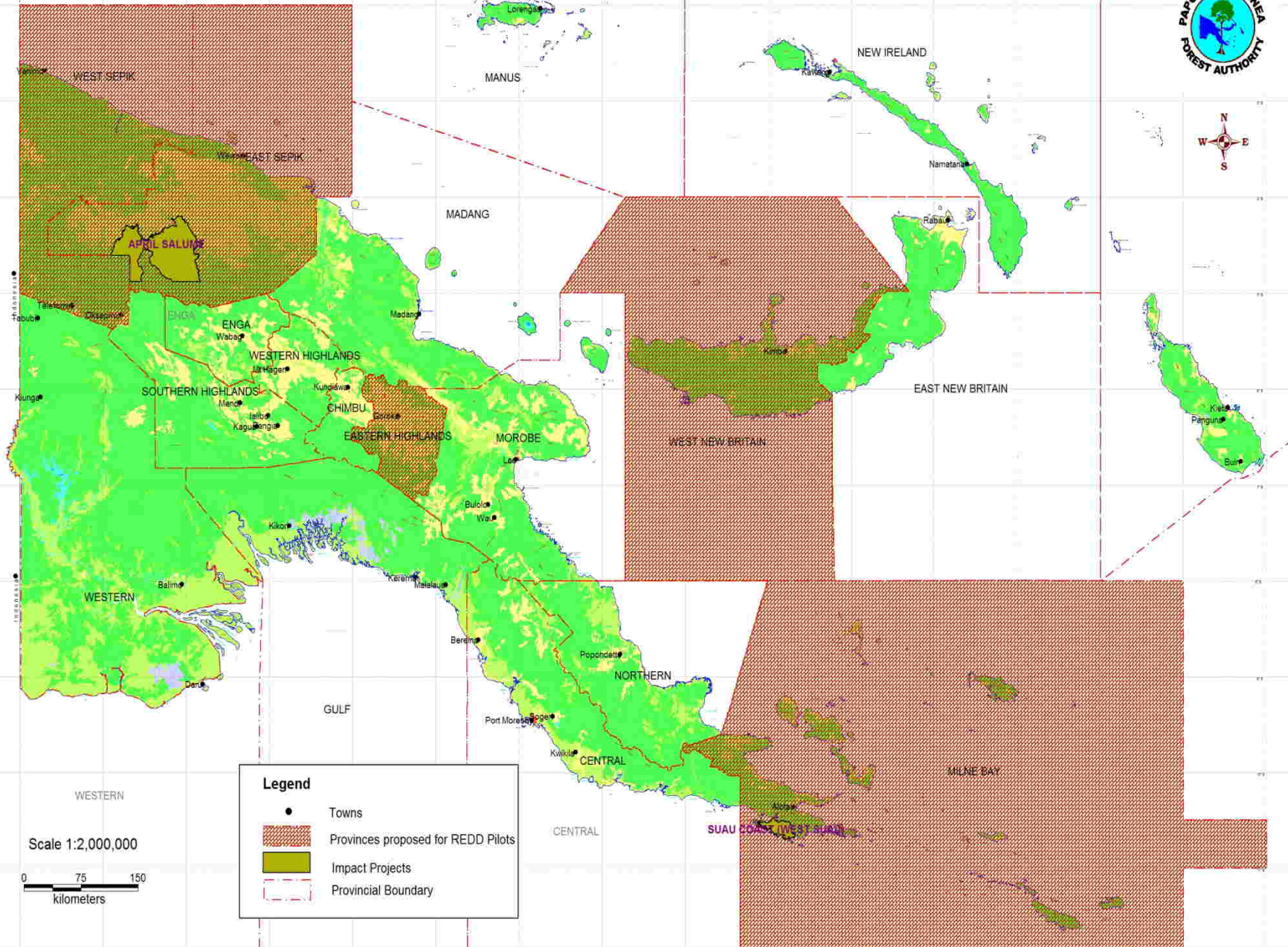
- **West New Britain Province**
 - **Secondary Forest Management (on regenerating logged over forest): 100,000 – 150,000 ha**
 - **Reforestation – 40,000 – 50,000 ha of logged over forest**

- **Mine Bay Province**
 - **Trial to comprise Reduce Impact Logging (RIL) in a 60,000 ha intact forest**

- **Sandaun Province**
 - **Afforestation Reforestation – 40,000 – 50,000 ha logged over forest**
 - **Forest Conservation – 100,000 – 200,000 ha intact forest**

- **East Sepik Province**
 - **April Salumei FMA – 343,900 ha intact forest**
 - **REDD+ activities will be determined after a development option study (DOS) is conducted by the PNGFA and other relevant stakeholders including OCCD and NGOs first quarter of 2012.**

PNG map showing REDD pilot Project Areas



Legend

- Towns
- ▨ Provinces proposed for REDD Pilots
- Impact Projects
- - - Provincial Boundary

Scale 1:2,000,000

0 75 150
kilometers

REDD PILOT ACTIVITIES

- ❑ To test policy, MRV methodologies, BSDS, FPIC, Carbon rights (ownership), governance and conflict resolution mechanisms, the PNGFA is currently focused on two sites for the REDD pilots:
 - ❑ April Salumei FMA REDD+ Pilot and,
 - ❑ Central Suau REDD+ Pilot

- ❑ April Salumei FMA REDD+ Pilot

Province : East Sepik
Area : 343, 900 ha
Population : 60,000
REDD+ Activities : to be determined by the DOS
Responsible Institution : PNGFA

What is tested?

- ✓ 34 acquisition and allocation processes
- ✓ Policy and legislative issues
- ✓ MRV methodologies
- ✓ Benefit sharing & distribution system (BSDS)
- ✓ Free Prior & Informed Consent (FPIC)
- ✓ Measurement of 5 carbon pools
- ✓ REDD+ criteria and guidelines

REDD PILOT ACTIVITIES

- Engage with local governments (LLGs) and ILGs

- Central Suau REDD+ Pilot

- Province : Milne Bay
 - Area : 60,000 ha
 - Population : 7,000
 - REDD+ Activities : Reduced Impact Logging

- Objective: Reduce collateral damage and forest degradation by 50%
 - Responsible Institution: PNGFA/FRI

- What will it test?

- ✓ RIL Enforcement
 - ✓ Silviculture/Environment practices
 - ✓ BSDS
 - ✓ EPIC
 - ✓ Measurement of 5 carbon pools
 - ✓ REDD+ criteria and guidelines
 - ✓ Community in MRV

COLLABORATION FOR PROGRESSING REDD PILOTS

- Government of Japan (GOJ) support to PNG through the PNGFA and other Agencies (i.e., OCCD, DEC, UPNG, etc.) is two fold:-
 - (a) GOJ Grant Aid Program
 - The component include;
 - × Remote Sensing GIS facility
 - × Satellite Images
 - × Airborne data
 - × Field survey equipment
 - × Software component
 - (b) JICA Technical Cooperation Project include:
 - × Nationwide forest base map
 - × National level forest resource database
 - × Monitoring system of forest resource include carbon stock

- The above GOJ support will assist the PNGFA update the current forest base map, build a competent forest database and create a forest monitoring system to assist with the REDD+ pilots.

PNG-UN REDD PROGRAM

□ Five Outcomes-:

- + Readiness Management Arrangements in Place, 7%.
- + National Information, Monitoring and MRV System Development, 77%.
- + Establishment of REL/RL supported, 5%.
- + Monitoring of abatement concepts in place, 6%.
- + Stakeholders engagement in PNG's REDD+ readiness process, 5%.

EU – MULTIPURPOSE NATIONAL FOREST INVENTORY

Important as this will be the first ever such inventory being conducted and will provide the following information:

- Extent of forest area
- Forest types, their extent and their major species
- Forest resources
- NTFP
- Forest Carbon Stocks for different forest types
- Current land-uses and GHG emissions

CIFOR/FORNET ACP – EU PROJECT

- Technical information and data – AGB Allometric Equations, Soil Carbon, BGB

NEXT STEP

- ✘ Conduct more awareness on Climate Change, its impacts and measures for mitigating the impacts, including REDD
- ✘ Establish a system that avoids or minimise any delays in progressing REDD+ processes
- ✘ Reduce different interests (community vs individuals) that can cause misunderstanding between the land/forest owners
- ✘ Ensuring that resources (funding and manpower) requirements are available to progress REDD processes
- ✘ Establish an effective and efficient monitoring system for the pilot areas
- ✘ Develop a mechanism for facilitating the benefit sharing arrangements

➤ **REDD+ initiatives on Climate Change compliments domestic effort and are geared towards enhancing sustainable forest management and biodiversity conservation which in turn contribute to sustainable development.**

➤ **The development of a National Land-use Plan to avoid competing use of land and unscrupulous forest clearance and provide security for REDD+ development Initiatives.**

➤ **The need for all stakeholders to work together to develop REDD+ initiatives.**

➤ **Registration of Integrated Land Owning Groups (ILGs)**

➤ **FPIC**

➤ **Community MRV**

-
- Review of Provincial Forest Plans
 - Review of Climate Change and Forestry Framework to make sure its in line with the National Climate Change Policy.
 - Conduct forest Vulnerability and Adaptation Assessment
 - Conduct Below Ground Biomass survey
 - Training and awareness of Climate Change and REDD (development of resource materials; brochures and posters).
 - **Testing out the three UN-REDD+ Phases**
 - **Phase 1 (Readiness) – 2011 – 2012**
 - **Phase 2 (Result based demonstration activities) – 2012 - 2013**
 - **Phase 3 (Payments for verified performance) – 2013 – 2018**



Thank you